



Cooperative Educational Service Agency #11

Annual Convention



June 7, 2010 @ 7:00 pm



CESA #11 Central Office

FORWARD

First, I want to thank the Board of Control for allowing me to serve as your CESA Administrator the past three years. And thanks to all of you for your well wishes and support over the past several years. I have been fortunate to be part of a high-performing team here at CESA #11. We have many talented full- and part-time employees whose service to the children and staff of the thirty-nine school districts and ten Head Start centers within our boundaries is top priority. We will do whatever it takes to assist you in fulfilling your missions. Indeed, that is exactly how we fulfill our mission.

The mission of CESA #11 is to *serve, educate and lead*. My hope is that we continue to carry forward a legacy of service, education and leadership. Our aim is to provide thoughtful, quality educational service and leadership by working together for lifelong learners.

CESAs are an important part of a quality educational system. CESA #11 is an *agency* created by statute to perform a variety of functions that are *educational* in nature – with a focus on student and staff learning. Our goal is to provide this *service* by working together with our partners in a *cooperative* manner to maximize our collective investment. Educational services may be direct (onsite teachers, paraeducators, therapists, etc.) or indirect (leadership, staff development, grant administration, etc.) in nature.

We can all be very proud of the learning that is taking place in the schools in the CESA #11 district. Our organization exists to assist you in bringing every student to high levels of achievement cost effectively. Thanks to all of you for your service to our most precious resource of all – our children!

And remember – **A cooperative means “We are You!”**

A handwritten signature in black ink that reads "Jesse L. Hamess". The signature is written in a cursive style with a large initial 'J' and 'H'.

TABLE OF CONTENTS

Forward	1
Table of Contents	2
List of Convention Delegates	3
Convention Agenda	4
Plan of Representation and Election	5-7
Board of Control Membership	8-9
Minutes of 2009 Annual Convention	10-13
CESA #11 Organizational Chart	14
The Local Community and CESA	15
2009-2010 Board of Control	16
Administrator Advisory Committee	17
CESA #11 Map / CESA State Map	18
CESA Administrators	19
Summary of Program Transactions	20-23

DELEGATES TO THE 2010 ANNUAL CONVENTION

<u>SCHOOL</u>		<u>DELEGATE</u>
Amery		Keith Anderson
Baldwin - Woodville		Ann Hilmanowske
Barron		Betty Missling
Birchwood		Robert Robotka
Boyceville		Timothy Sempf
Cameron	*	Caroline Dostal
Chetek	*	Natalie Springer
Clayton		Jill Otto
Clear Lake		Tom Aasmundrud
Colfax	*	Joel Hilson
Cumberland		Jonelle Gideo
Durand	*	Paul Hoch
Elk Mound	*	Margaret Dieter
Ellsworth		Kurt Buckner
Elmwood		Greg Nelson
Frederic		Chuck Holicky
Glenwood City		Lori Klinger
Grantsburg		Jim Sundquist
Hudson		Patricia German
Luck		Jacob Jensen
Menomonie		Amy Riddle-Swanson
New Richmond		Marilyn Duerst
Osceola	*	Timm Johnson
Pepin		Tim Stajkowski
Plum City		Kurt Henn
Prairie Farm		Jerrud Rossing
Prescott		Michael Matzek
Rice Lake		Ray Van Gilder
River Falls		Barb Kolpin
St. Croix Central	*	Kirk Lyksett
St. Croix Falls		Brent McCurdy
Shell Lake		Mary Ann Hook-Swan
Siren		Liz Simonsen
Somerset	*	Catherine Cranston
Spooner	*	Mary Lou Lawrence
Spring Valley	*	Allan Faber
Turtle Lake		Linda Flottum
Unity	*	David Moore
Webster		Wendy Larson

*Denotes incumbent Board of Control members

NOTE: Only the school district delegates are eligible to participate in the official business of the Convention.

CESA #11 ANNUAL CONVENTION - JUNE 7, 2010- 7:00 P.M.

PROPOSED AGENDA

PHASE I

1. Meeting Called to Order - Temporary Chairperson David Moore
2. Notice - Convening the Convention - Section 116.02 (1)(c) of the Wisconsin Statutes - read by Secretary Jesse Harness
3. Roll Call of Authorized School District Representatives - Secretary
4. Election of a Convention Chairperson

PHASE II

1. Call to Order by Convention Chairperson
2. Chairperson solicits a Motion to Follow Robert's Rules of Order during the Convention proceedings
3. Consideration of the Minutes of the June 1, 2009 Convention
4. Adoption of 2010 Convention Agenda
5. Review Plan of District Representation and Election
6. Appointment of Ballot Clerks by Convention Chairperson
7. Election of Representatives to the Board of Control
 - A. Secretary notes the schedule of Board Members and expiring terms of office
 - B. Caucuses are held as needed to nominate Board Members and recommend a rotation list to fill vacancies on the Board of Control
 - C. Delegate voting
 - Election of Board of Control members from clusters 1, 2, 3, and 6
 - Ballot to establish rotation list to fill vacancies on the Board of Control
 - Selection of first and second back-up school districts for at-large position on the Board of Control
8. Set Date for 2011 CESA #11 Convention
9. Fund 73 Report by Secretary
10. Administrator Report
11. Other Topics of discussion from Convention delegates
 - A. Board of Control per diem
12. Adjournment: Chairperson announces an organizational meeting of the Board of Control to follow

PHASE III - Organizational Meeting of Board of Control

1. Elect Board of Control Chairperson, Vice-Chairperson, and Treasurer for 2010-11
2. Other Official Business of the Board of Control - meeting dates, time, etc.

CESA #11 BOARD OF CONTROL
PLAN OF REPRESENTATION AND ELECTION

I. Geographic Clustering of School Districts

For purposes of determining representation on the Board of Control, school districts are subdivided into 6 clusters and one at-large position as follows:

Cluster #1 (2 Board Members)

Amery
Clayton
Clear Lake
Frederic
Luck
Osceola
St. Croix Falls
Unity

Cluster #2 (1 Board Member)

Birchwood
Grantsburg
Shell Lake
Siren
Spooner
Webster

Cluster #3 (2 Board Members)

Barron
Cameron
Chetek
Cumberland
Prairie Farm
Rice Lake
Turtle Lake

Cluster #4 (2 Board Members)

Durand
Ellsworth
Elmwood
Pepin
Plum City
Prescott
River Falls
Spring Valley

Cluster #5 (1 Board Member)

Boyceville
Colfax
Elk Mound
Menomonie

Cluster #6 (2 Board Members)

Baldwin-Woodville
Glenwood City
Hudson
New Richmond
St. Croix Central
Somerset

At-Large (1 Board Member)

Total Number of Board Members - 11

II. Method of Election

Before the election of 10 Board of Control members from the 6 clusters, nominations for the at-large position will be made from the floor. Voting for the at-large position will take place by all of the delegates present at the convention, utilizing the same election procedure as outlined below for the cluster elections.

A caucus of delegates from each cluster shall be held for the purpose of nominating candidates to be considered for election to the positions available in each cluster. Additional nominations may be made from the floor. Following the nominations for each cluster, voting will take place by all of the delegates present at the convention. The candidate(s) with the most votes, provided he or she receives a majority of the ballots cast, shall be elected. If no candidate receives a majority of the ballots cast, the person receiving the least number of votes shall be eliminated from the next ballot. The same procedure shall be followed with succeeding ballots, if required, until a person is elected. In case of a tie for persons receiving the least number of ballots, one additional ballot shall be taken in an attempt to break the tie. If the tie still exists, a coin toss shall determine who is to be eliminated on the next ballot.

In the event only two candidates are on the ballot for one position available, and they receive an equal number of votes, one additional ballot will be taken in an attempt to break the tie. If a tie still exists, a coin toss shall determine the winner.

III. Length of Terms on the Board of Control

At the initial delegate convention, following the election of 11 members to the Board of Control, the length of term for Board of Control members shall be determined by lot as follows:

At-large position - 3 year term
First 3 names drawn - 3 year term
Next 4 names drawn - 2 year term
Last 3 names drawn - 1 year term

Note: Two persons from the same cluster may not hold the same length of term. Re-drawing will be held if necessary.

In succeeding delegate conventions, all candidates will be elected for 3 year terms.

IV. Method to Fill Vacancies on the Board of Control

If a vacancy occurs on the Board of Control due to the resignation of a member or upon the incumbent otherwise ceasing to be a school board member, as specified in Section 116.02 (2)(a) or (c), the Secretary of the Board of Control shall request the school board from which the member came to appoint one of its members to fill the vacancy.

Should the school district board so contacted be unable to name a replacement within 30 days following notification, the procedure indicated below shall be followed:

Annually, at the CESA Convention, delegates from each geographic cluster of school districts, established for the purpose of determining representation on the Board of Control, shall meet in caucus and recommend a rotation list to fill a vacancy on the Board of Control, from that cluster, should the school district of the incumbent be unable to do so. The list shall include all school districts in the cluster not presently having members on the Board of Control. A school district contacted with a request to fill a vacancy shall have 30 days from the date of notification to fill the vacancy. Should they fail to do so within that time period the next district indicated on the rotation list shall be requested to do so. The rotation list shall be followed until a replacement is found.

First and second back-up districts for the At-Large position on the Board of Control shall also be determined with nominations made from the floor by delegates.

Voting shall take place by all delegates present at the convention utilizing the same procedure as outlined above for the cluster elections.

Persons elected to fill board positions under this procedure shall complete the term of the incumbent.

V. Method of Voting

All voting shall be by written ballot (i.e., election of convention chairperson, plan of representation, election of Board of Control members, etc.).

COOPERATIVE EDUCATIONAL SERVICE AGENCY #11

BOARD OF CONTROL MEMBERSHIP

BASED ON ANNUAL ROTATION PLAN

<u>Cluster</u>	<u>School District</u>	<u>Board Member</u>	<u>Term Expires</u>
1	Osceola	Timm Johnson	2010
2	Spooner	Mary Lou Lawrence	2010
3	Cameron	Caroline Dostal	2010
6	St. Croix Central	Kirk Lyksett	2010
5	Colfax	Joel Hilson	2011
6	Somerset	Catherine Cranston	2011
4	Durand	Paul Hoch	2011
At Large	Elk Mound	Margaret Dieter	2011
1	Unity	David Moore	2012
3	Chetek	Natalie Springer	2012
4	Spring Valley	Allan Faber	2012

THIS PAGE IS BEING UPDATED!

MINUTES

CESA #11 ANNUAL CONVENTION - JUNE 1, 2009

CESA #11 CONFERENCE ROOM - TURTLE LAKE, WISCONSIN

The Annual Delegate Convention of CESA #11 was called to order at 7:00 p.m. by David Moore, Temporary Chairperson.

Jesse Harness, CESA #11 Administrator, read the official notice of the Convention after which he took the roll call of the authorized district delegates.

School delegates in attendance were: Keith Anderson, Mike Bondarenko, Betty Missling, Bob Herscher, Caroline Dostal, Natalie Springer, Joel Hilson, Jonelle Gideo, Paul Hoch, Margaret Dieter, Jeff Stockwell, Steve Thompson, Shari Matz, Lori Klinger, Jim Sundquist, Lynn Robson, Amy Riddle-Swanson, Marilyn Duerst, Timm Johnson, Todd Glaus, Maury LeBreck, Ray Van Gilder, Barbara Kolpin, Mona Schmidt, Phil Holman, Michelle Renberg, Catherine Cranston, Mary Lou Lawrence, Allan Faber, Linda Flottum, David Moore, and Chuck Macke.

Delegates absent were: Gail Stark, Barry Ketz, Tom Aasmundrud, Jacob Jensen, Tim Stajkowski, Patrick Miller, and Kirk Lyksett.

Others in attendance: CESA Administrator Jesse Harness, CESA Administrative Assistant Kim Robel, and Colfax Superintendent Dennis Geissler,

Administrator Harness called for nominations for a permanent Chairperson for the Convention. A motion was made by Mona Schmidt, St. Croix Falls, seconded by Maury LeBreck, Prescott, to nominate David Moore as Convention Chairperson.

The motion carried.

A motion was made by Timm Johnson, Osceola, seconded by Paul Hoch, Durand, to close nominations and cast a unanimous ballot for David Moore as Convention Chairperson.

The motion unanimously carried. David Moore was duly elected Convention Chairperson.

Chairperson Moore officially called the Convention to order and indicated a need to adopt rules for conducting the convention proceedings. A motion was made by Betty Missling, Barron, seconded by Mary Lou Lawrence, Spooner, to adopt Robert's Rules of Order for the Convention.

The motion carried on a voice vote.

Chairperson Moore accepted, as presented, the minutes of the 2008 CESA #11 Annual Convention that were printed on pages 9-12 of the Annual Report that had been distributed in advance to all delegates.

A proposed agenda for the Convention was presented for consideration by the delegates. A motion was made by Todd Glaus, Plum City, seconded by Maury LeBreck, Prescott to approve the proposed agenda. The motion carried on a voice vote.

Administrator Harness explained the plan of representation. It was indicated that in accord with the plan, three positions on the Board of Control, one each from Clusters 1, 3 and 4 were up for election. Persons elected will serve 3-year terms.

Chairperson Moore appointed Dennis Geissler and Kim Robel to serve as ballot clerks.

Administrator Harness explained the plan of representation.

Chairperson Moore called for cluster caucuses to discuss nominations for members to serve on the Board of Control and the rotation list for filling vacancies. Each cluster would be allowed 5-10 minutes for that purpose. Clusters 1, 3, and 4 are to recommend nominees for membership on the Board of Control. Cluster caucuses were held beginning at 7:10 p.m.

Following the caucuses, Chairperson Moore reconvened the meeting at 7:23 p.m.

The Chairperson called for nominees from Cluster #1. A motion was made by Ray Van Gilder, Rice Lake seconded by Linda Flottum, Turtle Lake, to nominate David Moore.

The motion carried on a voice vote. The Chairperson declared David Moore elected to the Board of Control from Cluster #1.

The Chairperson called for nominations from Cluster #3. A motion was made by Betty Missling, Barron, seconded by Timm Johnson, Osceola, to nominate Natalie Springer.

The motion carried on a voice vote. The Chairperson declared Natalie Springer elected to the Board of Control from Cluster #3.

The Chairperson called for nominations from Cluster #4. A motion was made by Todd Glaus, Plum City, seconded by Paul Hoch, Durand, to nominate Allan Faber, Spring Valley.

The motion carried on a voice vote. The Chairperson declared Allan Faber elected to the Board of Control from Cluster #4.

Representatives of each of the clusters submitted a recommended rotation list to be used for back-up purposes in the event that the school district of the incumbent is unable to name a Board of Control replacement.

The rotation lists are as follows:

<u>Cluster #1</u>	<u>Rotation</u>	<u>Cluster #2</u>	<u>Rotation</u>
Amery	6	Birchwood	2
Clayton	4	Shell Lake	3
Clear Lake	5	Spooner (2010)*	6
Frederic	2	Grantsburg	1
Luck	3	Siren	4
Osceola (2010)*	7	Webster	5
St. Croix Falls	1		
Unity (2012)*	8		
<u>Cluster #3</u>	<u>Rotation</u>	<u>Cluster #4</u>	<u>Rotation</u>
Barron	<i>alphabetical</i>	Pepin	5
Cameron (2010)*	<i>order following</i>	Ellsworth	6
Chetek (2012)*	<i>district where</i>	Elmwood	4
Cumberland	<i>vacancy occurs</i>	Plum City	7
Prairie Farm		Prescott	8
Rice Lake		River Falls	1
Turtle Lake		Spring Valley (2012)*	2
		Durand (2011)*	3
<u>Cluster #5</u>	<u>Rotation</u>	<u>Cluster #6</u>	<u>Rotation</u>
Boyceville	2	Baldwin-Woodville	4
Colfax (2011)*	4	Glenwood City	3
Elk Mound (2011)**	3	Hudson	2
Menomonie	1	New Richmond	1
		Somerset (2011)*	6
		St. Croix Central (2010)*	5

** At-Large (1 Board Member)(2011)

*Presently have a member on Board of Control

The Chairperson indicated that there was a need to provide first and second back-up school districts for the at-large position on the Board of Control as provided for in the Plan of District Representation. A motion was made by Catherine Cranston, Somerset, seconded by Jonelle Gideo, Cumberland, to keep Turtle Lake as the first back-up and New Richmond as the second back-up district for the at-large position on the Board of Control.

The motion carried on a voice vote.

A motion was made by Ray Van Gilder, Rice Lake, seconded by Bob Herscher, Birchwood, to set June 7, 2010 as the date for the 2009-2010 CESA #11 Annual Delegate Convention.

The motion carried on a voice vote.

CESA Administrator Harness gave a brief report during which he reviewed the yearly expenditure summary and commented on a number of activities from the past year and upcoming summer offerings. He also shared the following personnel changes:

- Jane Manske – Northern Lights Network Manager: retirement
- Bev Haverly – Educational Consultant-Special Education: retirement
- Greg Stager – Agency Network Manager: new hire
- Jennifer Olson – Northern Lights Network Manager: new hire

Administrator Harness expressed appreciation to the Board of Control, CESA staff members, Boards of Education, district administrators, and school staff.

There being no further business to come before the Convention, a motion was made by Linda Flottum, Turtle Lake, seconded by Mona Schmidt, St. Croix Falls, to adjourn the meeting at 7:50 p.m.

The motion was carried on a voice vote.

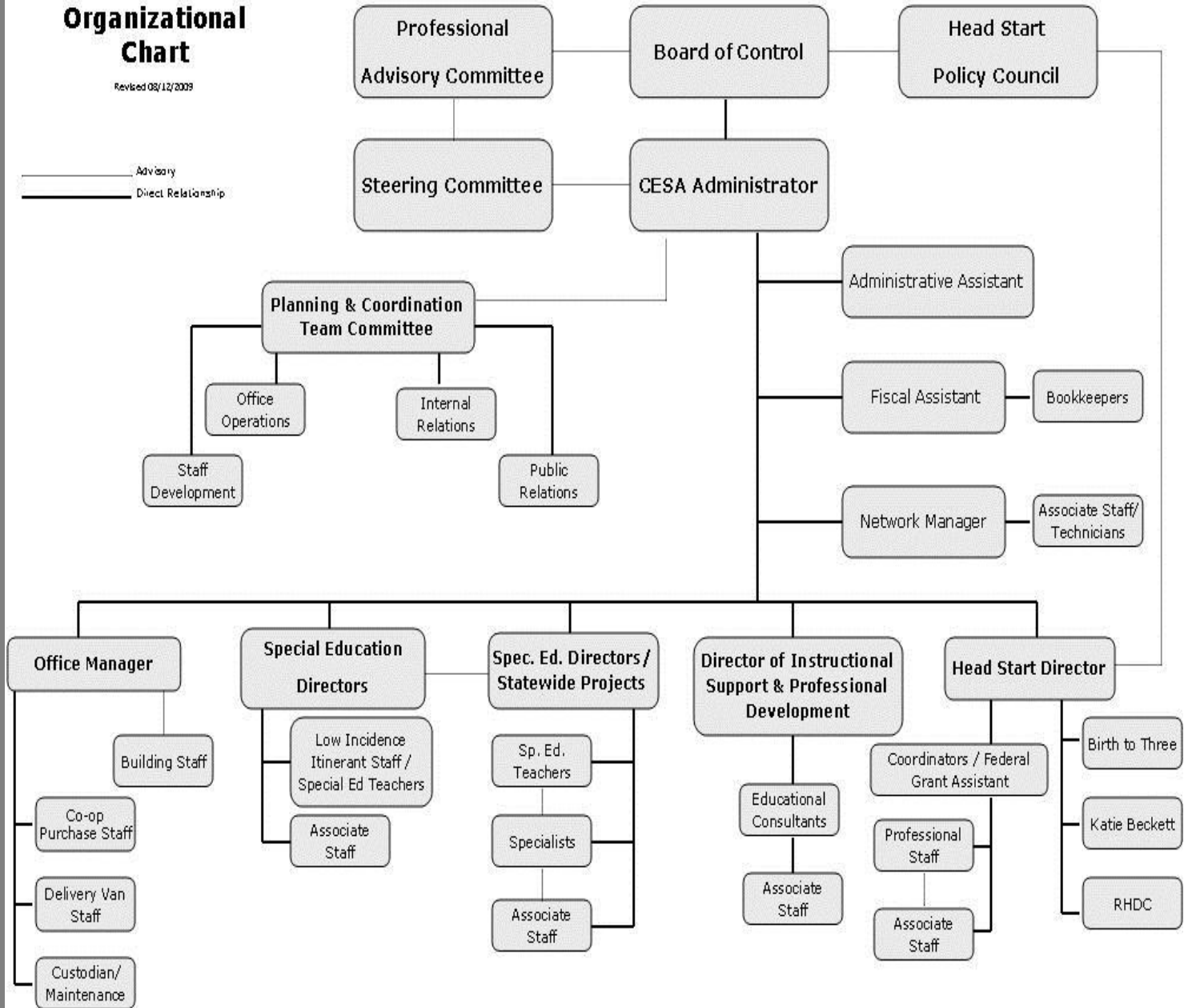


Jesse Harness
CESA #11 Administrator
kr

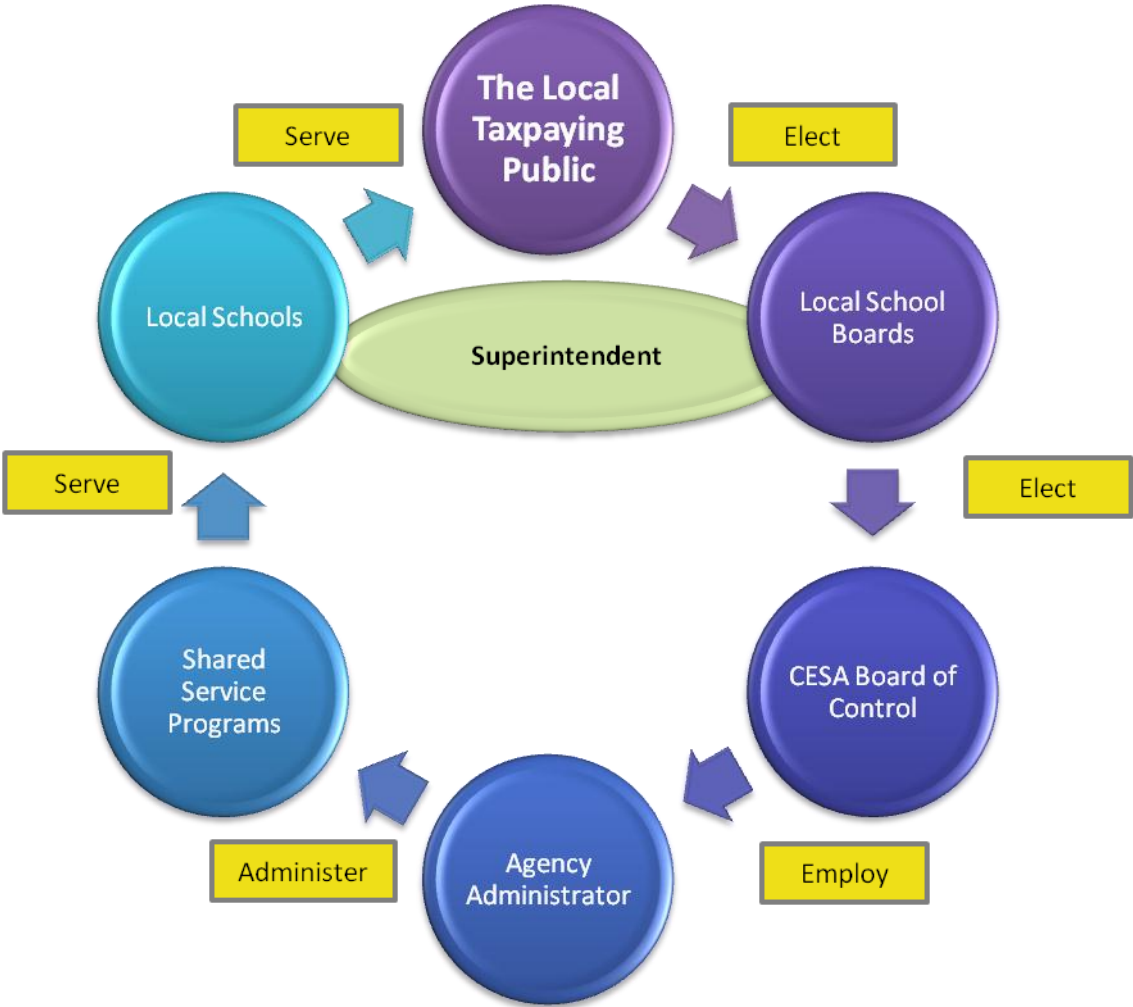
CESA #11 Organizational Chart

Revised 08/12/2009

— Advisory
— Direct Relationship



The Local Community and CESA



BOARD OF CONTROL

The Cooperative Educational Service Agency is governed by a Board of Control which is composed of members of the school boards of the districts within the Agency. Annually, each board selects a delegate to the Board from their membership. State Statutes limit the Board to eleven members.

The Board of Control, upon recommendation of the Agency Administrator, employs professionally certified individuals to direct the various projects and programs. These individuals direct the projects in keeping with the Board of Control policy, agency administrative rules and regulations, and other local, state and federal requirements. The directors also screen, interview, and recommend the employment of professional staff as required by the various projects.

Board of Control functions:

1. Determine agency policies
2. Receive state aid for operation of agency
3. Approve service contracts and costs
4. Appoint administrator
5. Elect chairman, vice-chairman, and treasurer from among its members
6. Authorize expenditure of funds
7. Establish salaries of all personnel
8. Meet monthly
9. Do all other things necessary to carry out the intent of the law

BOARD OF CONTROL MEMBERSHIP 2009-10

<u>Cluster</u>	<u>School District</u>	<u>Board Member</u>	<u>Term Expires</u>
1	Amery / Osceola	Timm Johnson	2010
2	Spooner	Mary Lou Lawrence	2010
3	Cameron	Caroline Dostal	2010
6	St. Croix Central	Kirk Lyksett***	2010
5	Colfax	Joel Hilson	2011
6	Somerset	Catherine Cranston	2011
4	Durand	Paul Hoch	2011
At Large	Elk Mound	Margaret Dieter **	2011
1	Unity	David Moore *	2012
3	Chetek	Natalie Springer	2012
4	Spring Valley	Allan Faber	2012

* Board Chairman ** Vice Chairman *** Treasurer

ADMINISTRATOR ADVISORY COMMITTEE

State Statute requires that each Cooperative Educational Service Agency have a professional advisory committee consisting of the school district administrator of each school district in the agency. The CESA #11 Administrator Advisory Committee meets once a month to discuss mutual concerns, existing services, and the possible development of future services. The committee is aware of the needs of the local districts and gives information and recommendations concerning cooperative efforts to the Administrator and the Board of Control.

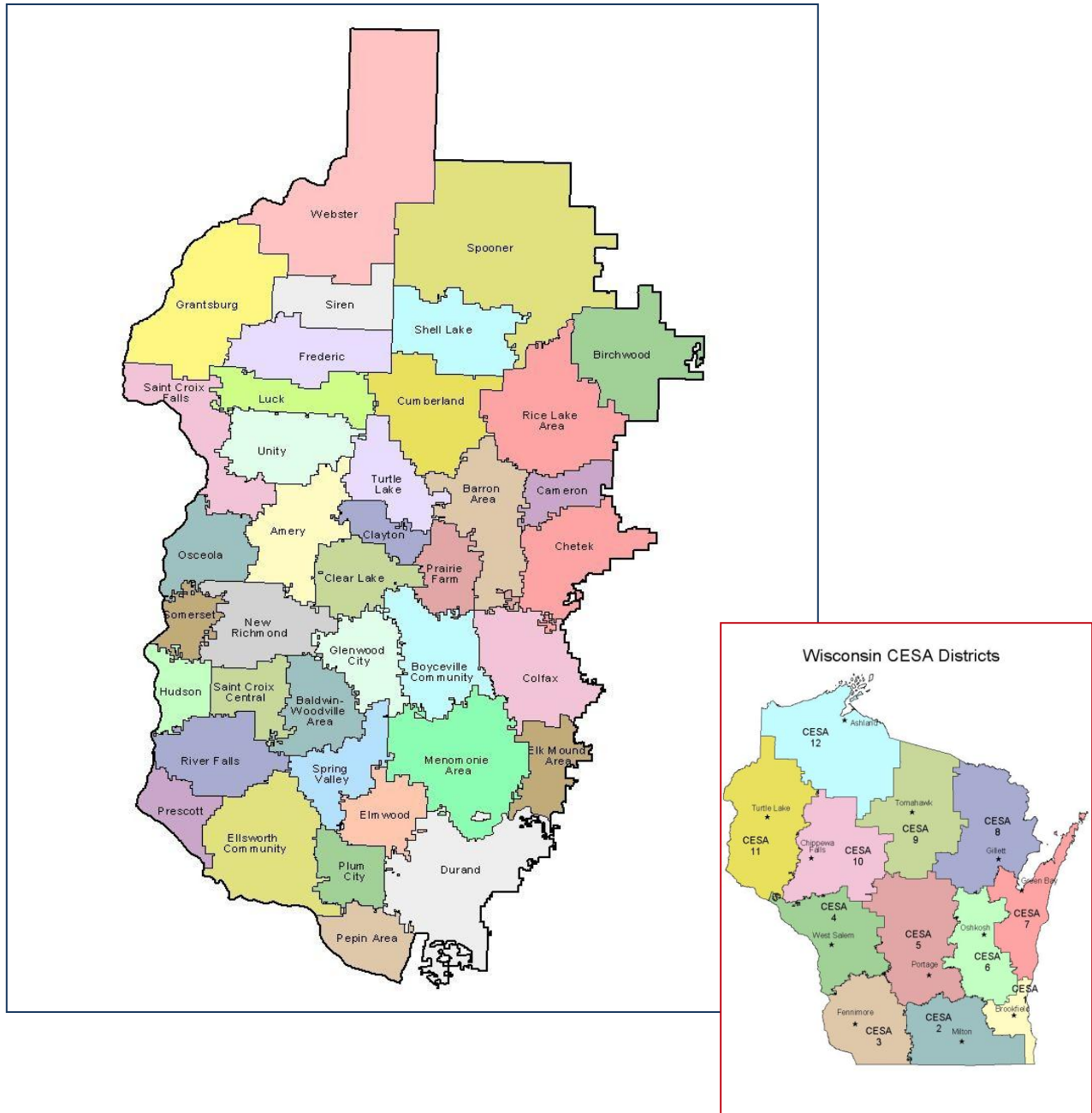
2009-10

ADVISORY COMMITTEE OF DISTRICT ADMINISTRATORS

<u>DISTRICT</u>	<u>ADMINISTRATOR</u>	<u>DISTRICT</u>	<u>ADMINISTRATOR</u>
Amery	<i>Steve Schiell</i>	Menomonie	<i>Dan Woll</i>
Baldwin- Woodville	<i>Russell Helland</i>	New Richmond	<i>Maurice Veilleux</i>
Barron	<i>Monti Hallberg</i>	Osceola	<i>Roger Kumlien</i>
Birchwood	<i>Frank Helquist</i>	Pepin	<i>Bruce Quinton</i>
Boyceville	<i>Chuck Buckel</i>	Plum City	<i>Mark Luebker</i>
Cameron	<i>Randy Braun</i>	Prairie Farm	<i>Don Hauck</i>
Chetek	<i>Al Brown</i>	Prescott	<i>Roger Hulne</i>
Clayton	<i>Cathleen Shimon</i>	Rice Lake	<i>Paul Vine</i>
Clear Lake	<i>Brad Ayer</i>	River Falls	<i>Tom Westerhaus</i>
Colfax	<i>Dennis Geissler</i>	St. Croix Central	<i>David Bradley</i>
Cumberland	<i>Barry Rose</i>	St. Croix Falls	<i>Glenn Martin</i>
Durand	<i>Jerry Walters</i>	Shell Lake	<i>Brian Nord</i>
Elk Mound	<i>Ron Walsh</i>	Siren	<i>Scott Johnson</i>
Ellsworth	<i>Barry Cain</i>	Somerset	<i>Randy Rosburg</i>
Elmwood	<i>Adam Zenner</i>	Spooner	<i>Don Haack</i>
Frederic	<i>Jerry Tischer</i>	Spring Valley	<i>David Wellington</i>
Glenwood City	<i>Tim Emholtz</i>	Turtle Lake	<i>Charles Dunlop</i>
Grantsburg	<i>Joni Burgin</i>	Unity	<i>Brandon Robinson</i>
Hudson	<i>Mary Bowen-Eggebraaten</i>	Webster	<i>Jim Erickson</i>
Luck	<i>Rick Palmer</i>		

COOPERATIVE EDUCATIONAL SERVICE AGENCY 11

CESA #11 provides leadership to assist schools in their mission of bringing every student to high levels of achievement, cost-effectively. While CESA administration supports various shared services and activities directly, another vital role is to research and develop creative ways to acquire needed resources and organize services for schools that are both effective and cost efficient.



CESA ADMINISTRATORS, OFFICES & SECRETARIES-2009-2010

<p>CESA #1 Tim Gavigan 19601 W. Bluemound Rd. Brookfield, WI 53045 (262)787-9510 (Ext. 9510) FAX: (262)787-9501</p>	<p>tgavigan@cesa1.k12.wi.us www.cesa1.k12.wi.us Exec. Assist: Patty Castner</p>	<p>CESA #7 Jeffrey Dickert 595 Baeten Road Green Bay, WI 54304 (920)617-5612(Ext. 612) FAX: (920) 492-5965</p>	<p>jdickert@cesa7.k12.wi.us www.cesa7.k12.wi.us Secretary: Pamela Racine</p>
<p>CESA #2 Gary Albrecht 448 East High Street Milton, WI 53563 (608) 758-6232 (Ext. 301) FAX: (608) 868-4864</p>	<p>galbrech@cesa2.k12.wi.us www.cesa2.k12.wi.us Admin. Asst: Tina Smith</p>	<p>CESA #8 Robert Kellogg 223 West Park Street P.O. Box 320 Gillett, WI 54124-0320 (920)855-2114(Ext. 223) FAX: (920)855-2299</p>	<p>bkellogg@cesa8.k12.wi.us www.cesa8.k12.wi.us Secretary: Kathy Kruschke</p>
<p>CESA #3 Nancy Hendrickson 1300 Industrial Dr. Fennimore, WI 53809 (608) 822-3276 (Ext. 201) FAX: (608) 822-3828</p>	<p>nhendrickson@cesa3.k12.wi.us www.cesa3.k12.wi.us Admin.Asst: Marianne Krogen</p>	<p>CESA #9 Jerry Fiene 304 Kaphaem Rd. P.O. Box 449 Tomahawk, WI 54487 (715) 453-2141(Ext. 257) FAX: (715) 453-7519</p>	<p>jfiene@cesa9.k12.wi.us www.cesa9.k12.wi.us Admin. Asst: Jenny Miner</p>
<p>CESA #4 Guy Leavitt 923 E. Garland St. West Salem, WI 54669 (608) 786-4804 FAX: (608) 786-4801</p>	<p>gleavitt@cesa4.k12.wi.us www.cesa4.k12.wi.us Secretary: Michelle Kotek mkotek@cesa4.k12.wi.us</p>	<p>CESA #10 Larry Annett 725 West Park Avenue Chippewa Falls, WI 54729 (715)720-2079(Ext. 2079) FAX: (715) 720-2070</p>	<p>annettd@cesa10.k12.wi.us www.cesa10.k12.wi.us Secretary: Val Bryson (720-2078)</p>
<p>CESA #5 Donald Stevens 626 East Slifer Street P.O. Box 564 Portage, WI 53901-0564 (608) 742-8811 (Ext. 222) FAX: (608) 742-2384</p>	<p>stevensd@cesa5.k12.wi.us www.cesa5.k12.wi.us Secretary: Jean Kabele (Ext. 223)</p>	<p>CESA #11 Jesse Harness 225 Ostermann Drive Turtle Lake, WI 54889 (715) 986-2020 (Ext. 2115) FAX:(715) 986-2040</p>	<p>jesseh@cesa11.k12.wi.us www.cesa11.k12.wi.us Admin. Assist: Kim Robel (Ext. 2116) kimr@cesa11.k12.wi.us</p>
<p>CESA #6 Joan Wade 2300 Ripon Road P.O. Box 2568 Oshkosh, WI 54903-2568 (920) 236-0512 (Ext. 512) FAX: (920) 424-3478</p>	<p>jwade@cesa6.k12.wi.us www.cesa6.k12.wi.us Secretary: Anne Kirk akirk@cesa6.k12.wi.us</p>	<p>CESA #12 Ken Kasinski 618 Beaser Avenue Ashland, WI 54806 (715) 682-2363 (Ext. 107) FAX: (715) 682-7244</p>	<p>kenk@cesa12.k12.wi.us www.cesa12.k12.wi.us Secretary: Linda Toldness (Ext. 105) lindat@cesa12.k12.wi.us</p>

2009 - 2010 CESA #11 Expenditures

(as of 5/15/2010)

394 BURN CO ALT EDUC GRANT	\$43,632.02
593 YOUTH APPRENTICESHIP	\$41,862.15
614 HEAD START (STATE)	\$376,208.77
633 RURAL HEALTH DENTAL CLINIC	\$626,660.08
634 KATIE BECKETT	\$53,252.75
635 ATS - ALOCHOL TRAFFIC & SAFETY	\$0.00
636 STUDENT MINI GRANTS	\$0.00
642 AOD PARTRSHP NETWORK	\$74,845.04
647 PEER REVIEW & MENTORING	\$5,693.89
703 GIFTED & TALENTED GRANT	\$16,999.92
746 LICENSE RENEWAL CTR	\$8,449.79
660 NORTHWEST PASSAGE	\$81,905.11
822 NORTHWEST PASSAGE - ARRA	\$3,166.00
313 ARRA IDEA FT	\$53,108.84
319 ARRA IDEA PRESCHOOL	\$0.00
320 ARRA - WMELS	\$1,418.84
340 EC LDRSHIP (DISCRETIONARY)	\$95,855.80
341 FLOW THROUGH	\$1,215,094.47
342 CSPD (RSN) GRANT	\$109,890.95
345 ENGLISH 2ND LANG	\$45,090.32
346 POST HIGH PROJECT	\$90,391.04
347 EARLY CHILDHOOD ENTMT	\$53,577.30
348 WSTI GRANT	\$228,291.18
349 SPDG-PERSONNEL DEV GRANT	\$48,272.39
000 CESA AGENCY ADMINISTRATION	\$312,389.64
101 SP ED DIR - MANEY	\$152,628.37
103 SPEC ED DIR-WESTERN	\$144,839.75
104 SP. EDUC. DIR.- HOFF	\$29,867.28
105 SPEC ED DIR-KAMPA	\$28,187.06
107 SP ED DIR-KVAPIL	\$99,813.03
109 EC - BIRCHWOOD	\$11,844.72
115 EC AIDE-CUMBERLAND(SCHWEDERSKE)	\$30,597.23
117 TCHR AIDE-PRAIRIE FARM	\$28,998.13
118 EDB CAMERON ELEM.	\$113,211.17
119 EC CAMERON	\$70,308.71
128 VI/O&M EXT. YEAR SUM-STACHOWIAK	\$628.68
130 HEARING IMPAIRED	\$350,901.39
135 VISION / O. & M.	\$237,431.91
139 HIP EXT. YEAR-WEBSTER	\$526.83
147 INTPR TUTR - N. RICH	\$35,381.87
148 INTERPRETER - WEBSTER	\$56,743.56
151 CESA-OCCUPATIONAL THERAPY	\$324,256.04
152 CESA-PHYSICAL THERAPY	\$234,821.96
160 PSY - UNITY/PFARM	\$58,527.61
163 PSY - FREDERIC	\$32,272.56
164 PSY - J.BENZEL	\$74,198.06

169 PSY - JAKUPCIAK	\$58,771.40
173 PSY-WARD	\$58,213.75
182 SP. THERAPY - LANZA	\$18,265.27
184 SP THER - HOEFLER	\$25,356.77
185 SP THER - D.SKRUPKY	\$60,315.07
240 SCHOOL BASED SERVICE	\$598,764.12
301 SPECIAL EDUCATION CONSULTATION	\$45,752.04
305 PARENT LIAISON-RAMACHER	\$1,790.30
336 PT - BARRON MEM HOSP	\$11,567.23
338 PT - CUMBLND MEM HOSP	\$11,582.75
352 OT- HDR (BURNETT CO)	\$76,194.27
354 PT AMERY REGL MED. CTR - AMERY	\$26,390.00
355 AUDIOLOGICAL SERVICES	\$101,869.28
395 ASSISTIVE TECHNOLOGY	\$2,965.88
396 POSITIVE BEHAVIOR SUPPORTS	\$4,890.34
398 BEHAVIOR PROBLEM SOLVING	\$4,046.47
611 CREATE-RACIAL EQUITY	\$14,711.46
698 SEIMC	\$118,374.30
711 CREATE-ASSESSMENT	\$37,914.53
712 C.S.P.D. & RSN LIAISION	\$74,309.43
713 PARENT EDUCATOR (WSPEI)	\$23,308.96
721 WSTI LOCAL ACCOUNT	\$12,050.87
737 TRANSITION RESOURCES REPOSITORY	\$9,342.44
844 SP ED SECY-HOFF	\$11,226.77
371 IMMIGRANT CHILD & YOUTH	\$31,604.56
380 #1 AFTER SCHOOL PROGRAMS #1	\$33,186.80
381 #2 AFTER SCHOOL PROGRAMS #2	\$10,222.42
382 MDAT DEVELOPMENT	\$2,959.42
557 STAFF DEV. INT.#1 C.PERKINS	\$149,660.35
577 MIG-MEDICAID INFRASTRUCTURE	\$34,073.00
612 HEAD START PA22	\$3,430,413.89
613 HEAD START PCC PA25	\$1,877,915.61
616 HEAD START TRAINING	\$94,384.08
631 ARRA - HEAD START	\$185,286.88
633 RURAL HEALTH DENTAL CLINIC	\$1,756.37
639 DRUG FREE SCHOOLS	\$64,542.73
643 AP INCENTIVE GRANT	\$33,103.58
646 ONE-TIME PROG IMPROVEMENT	\$163,890.00
708 TITLE I NETWORKING GRANT	\$41,228.70
717 EETT-TECHNOLOGY GRANT	\$50,445.59
814 ARRA - EETT GRANT	\$2,034.00
617 FOOD SERVICE - HEAD START	\$183,322.20
747 DELIVERY SERVICE	\$91,954.73
749 AGENCY VEHICLE PURCHASE	\$41,774.25
764 ISPD VEHICLES	\$14,825.10
817 EARLY RETIREMENT HEALTH INSC FUND	\$9,431.00
808 OPEB TRUST	\$49,093.88
624 3 CO. - BIRTH TO 3 UNEMPLOYMT ESCROW	\$6,620.35
000 INTERFUND OPERATING ACCOUNTS	\$792,633.34

915 LEGAL EXPENSE-NEGOTIATIONS	\$7,298.13
209 REACH	\$19,667.52
551 VOCATIONAL EDUCATION LIBRARY	\$9,561.06
595 LINK 4 LEARNING	\$28,188.42
596 CMS 4 SCHOOLS	\$12,483.62
597 SIMS SUPPORT NETWORK	\$5,318.18
601 BURNETT CO ALT. LEARNING	\$113,789.75
602 WASHBURN CO HIGH SCHOOL	\$79,306.27
603 BARRON CO ALC	\$216,552.23
610 GEDO2 NIGHT SCHOOL-MENOMONIE	\$15,418.37
620 C P R PROJECT	\$3,626.84
650 HEALTHY STUDENTS, STAFF, SCHOOLS	\$45,417.89
652 HUMAN FAIRNESS & EQUITY	\$6,977.38
665 STUDENT ACHIEV.GUAR.IN ED (SAGE)	\$12,788.00
666 N. LIGHTS INST'L PROGRAMING	\$86,261.94
667 ITV SIGN LANGUAGE	\$4,135.27
668 NORTHERN LIGHTS ADMINISTRATION	\$196,189.01
669 NORTHERN LIGHTS INTERNET	\$203,139.27
673 VIRTUAL EDUCATION	\$15,679.47
678 PROFESSIONAL LIBRARY	\$2,528.41
679 SCIENCE MATH & TECH	\$54,611.65
685 MENOMONIE SUMR REC PROGRAM	\$69,901.00
689 N LIGHTS NETWORK - CARRY OVER	\$36,557.83
702 TITLE IIA ADMIN COSTS	\$49,102.14
705 TITLE I	\$130,718.09
710 NCSC, DIGICARD & NOVELL NETWORK	\$14,834.38
726 BUILDING STRONGER COMMUNITIES	\$9,381.35
734 NEW PARADIGM PARTNERS	\$4,116.00
741 INSTR. TECH. CONSULTATION	\$19,885.35
743 ENVIRONMENTAL SERVICES	\$34,241.95
745 N I B S	\$15,216.51
750 TECHNOLOGY SERVICES	\$36,233.54
752 SCHOOL TECHNICIANS	\$163,104.51
756 COUNSULTING & COORD NETWORK SRVC	\$146,439.18
757 IN DIST. CURRILM PROJECT W/SUPPORT	\$118,971.70
758 IN DIST CURRM PROJECT - NO SUPPORT	\$94,253.07
816 ARRA ISPD SUPPORT	\$27,438.74
730 COOP PURCHASING	\$84,273.34
225 POST SECONDARY FOLLOW-UP	\$28,432.04
388 EC ISPD INSERVICE	\$449.87
535 EXCEL. IN ECONOMIC EDUC	\$1,859.26
555 WIS CAREERS	\$6,977.40
619 PRE-K CTR WIDE	\$28,068.10
622 CADOTT PRE-K SRVC	\$16,734.42
624 3 CO. - BIRTH TO 3	\$88,684.45
625 BARRON CONTRACTED SERVICES	\$23,739.28
627 RICE LAKE PRE K (HS) SERVICES	\$77,808.98
628 FREDERIC PRE K (HS) SERVICES	\$781.98
629 STANLEY/BOYD PRE K (HS) SERVICES	\$19,951.24

630 BARRON PRE K (HS) SERVICES	\$23,045.21
632 CHIPPEWA FALLS PRE-K	\$113,439.34
633 RURAL HEALTH DENTAL CLINIC	\$143,073.46
649 NEW RICH PREK	\$47,823.47
657 CAMERON PREK SRVC	\$12,772.99
677 MATH/SCIENCE GRANT	\$146,581.02
690 MENOMONIE PREK SRVC	\$73,372.09
691 ST.CR.FALLS PREK SRVC	\$214.52
692 LUCK DISTRICT PREK SRVC	\$7,176.78
693 LUCK HD ST PREK SRVC	\$648.93
695 OSCEOLA PREK	\$1,743.89
696 POLK CO. EARLY LRNG PREK	\$46,400.48
727 ISPD GRAD CREDIT COURSES	\$2,471.29
748 CESA STORE - MISC	\$3,788.14
755 STAR ACADEMY	\$74,192.30
760 TITLE I IN-SERVICE	\$20,589.75
762 FACILITATING THE FUTURE	\$113,572.38
763 VITERBO MASTERS PROGRAM	\$8,444.25
793 STATE TRANSITION CONF	\$129,962.78
795 CESA INSTRL TECH SERVICE COUNCIL	\$951.92
811 HEAD ST GENERAL ACCT	\$864.90
813 HEAD START MISC.	\$13,168.29
820 ADVISORY COM. MTGS	\$12,207.69
830 SPELLING BEE	\$2,357.80
833 CCTV / VI EQUIPMENT	\$178.75
835 ACADEMIC DECATHLON	\$5,483.65
850 UNEMPLOYMENT COMP.	\$14,646.65
858 ISPD ADMINISTRATION	\$27,751.94
860 OSCAR ADMINISTRATION	\$14,713.39
862 CESA 11 FACILITATING FUTURE	\$33,280.15
879 VOCATIONAL INSERVICE	\$5,622.27
945 CESA 11 AGENCY TECHNOLOGY (TECH FD)	\$146,129.77
960 AGENCY WELLNESS GRANT	\$751.96
980 CESA IN-SERVICE SUPPLIES	\$3,486.93

GRAND TOTAL	\$17,451,748.91
--------------------	------------------------